

ROD RACK INSTALLATION INSTRUCTIONS

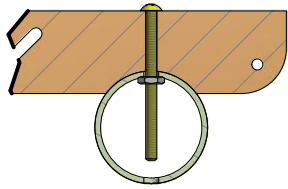


FIG. 1

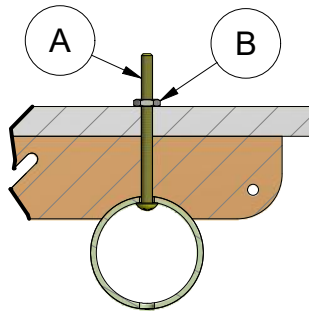
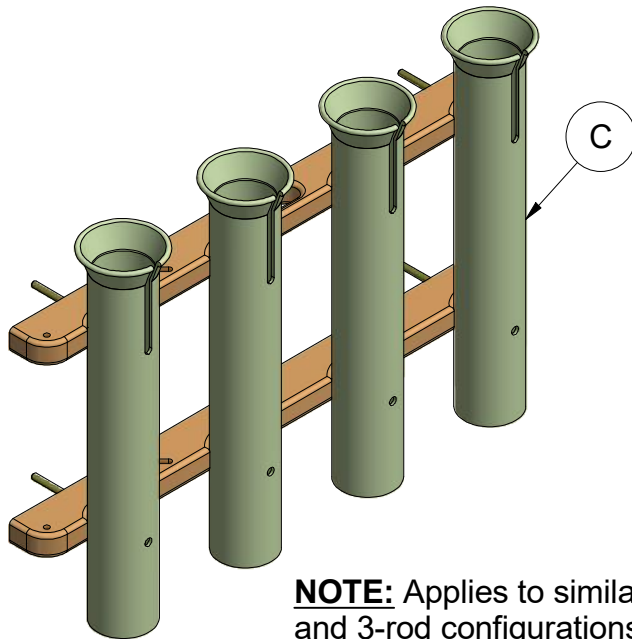


FIG. 2

NOTE: Mounting bolts are reversed to accommodate packaging. They must be reversed for mounting.



NOTE: Applies to similar 2-rod and 3-rod configurations.

Mounting Instructions:

- 1) Establish the desired location of your Rod Rack.
- 2) Make sure you can access the back of the mounting area in order to install mounting nuts. (See Blind Mounting Instructions on reverse side if unaccessible).

IMPORTANT NOTE: At this time check to make sure you will not be drilling into any wiring, livewells or gas tanks.

- 3) Remove the 4 outside machine bolts from the Rod Rack.
- 4) Carefully position the Rod Rack and mark the 4 outside holes on the mounting surface.
- 5) Use a 7/32" drill bit to drill mounting holes in the surface at the marked locations.
- 6) Insert bolts through the tubes, backer plate and mounting surface (refer to Fig. 2), install nuts and tighten securely.

PARTS		
IT #	QTY	DESCRIPTION
A	4	#10-24 x 2-1/2 TRUSS HEAD MACHINE BOLT
B	4	#10-24 HEX NUT
C	1	ROD RACK SET
D	1	INSTRUCTION SHEET

BLIND FASTENING INSTALLATION INSTRUCTIONS

If you are not able to access the back of the mounting area you can mount your rod rack with screws. You will need to purchase 4 ea. #10 truss head screws, which are atleast 1-3/4" long. Truss head screws are shaped like the screw displayed in Fig. 4 and are recommended so that your rod butts will not rub against the screws.

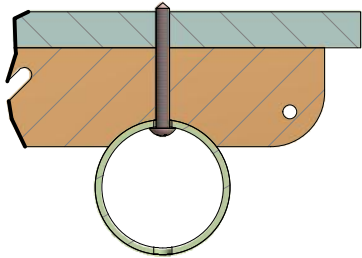


FIG. 3



FIG. 4

Mounting Instructions:

- 1) Establish the desired location of your Rod Rack.

IMPORTANT NOTE: At this time check to make sure you will not be drilling into any wiring, livewells or gas tanks.

- 2) Remove the 4 outside machine bolts from the Rod Rack. These bolts can be discarded and saved for another project.

- 3) Carefully position the Rod Rack and mark the 4 outside holes on the mounting surface.

- 4) Use a 5/32" drill bit to drill mounting holes in the surface at the marked locations.

- 5) Insert screws through the tubes, backer plate and mounting surface (refer to Fig. 3), and tighten securely.

FINAL NOTE: After successfully completing your installation carefully insert your rods into the Rod Rack. If any part of your rod butt comes into contact with the screws we suggest applying a marine silicone sealant to the screw heads, this will prevent any damage to your rod butts.